

Lifecare investor presentation

23 September 2021



Disclaimer

The information in this presentation has been prepared by Lifecare (the “Company”). This presentation does not constitute a recommendation regarding any securities of the Company. By accepting to attend this presentation and/or receive this information, you agree to be bound by the following limitations and provisions:

This presentation has been prepared based on information available as of the date hereof. No representation or warranty (expressor implied) is made as to, and no reliance should be placed on, any information, including projections, estimates, targets and opinions, contained herein, and no liability whatsoever is accepted as to any errors, omissions or misstatements contained herein, and, accordingly, none of the Company, or any advisor or any such persons’ officers or employees accepts any liability whatsoever arising directly or indirectly from the use of this presentation. The Company is in its early stages of development and is considered to be a venture company. Venture companies in general entail a high degree of risk. It is highly recommended that potential investors seek further advice of risks associated with venture investments in general, and in particular specific risks for the Company. The information herein is subject to change, completion, supplements or amendments without notice. By relying on this presentation, you accept the risk that the presentation does not cover matters that could have been disclosed, have a more comprehensive investigation been carried out.

The presentation is based on the economic, regulatory, market and other conditions as in effect on the date hereof and may contain certain forward-looking statements. By their nature, forward-looking statements involve risk and uncertainty because they reflect the Company’s current expectations and assumptions as to future events and circumstances that may not prove accurate. It should be understood that subsequent developments may affect the information contained in this document, which neither the Company nor its advisors are under an obligation to update, revise or affirm.

This complete presentation is for informational purposes only and does not constitute an offer to sell shares in of the company. This presentation is not a prospectus, disclosure document or offering document and does not purport to be complete.

This presentation has not been reviewed or approved by any regulatory authority or stock exchange. The (re)distribution of this presentation and/or any prospectus or other documentation into jurisdictions other than Norway may be restricted by law. This presentation does not constitute or form part of any offer or invitation to sell or issue, or any solicitation of any offer to acquire any securities offered by any person in any jurisdiction in which such an offer or solicitation is unlawful. Neither this presentation nor anything contained herein shall form the basis of any contract or commitment whatsoever. Persons into whose possession this presentation comes should inform themselves about and observe any such restrictions. Any failure to comply with these restrictions may constitute a violation of the securities laws of any such restrictions.

The presentation and any purported liability in connection with it is subject to Norwegian law and is subject to the exclusive jurisdiction of the Norwegian courts.

Content overview



Why invest in Lifecare



Lifecare organization



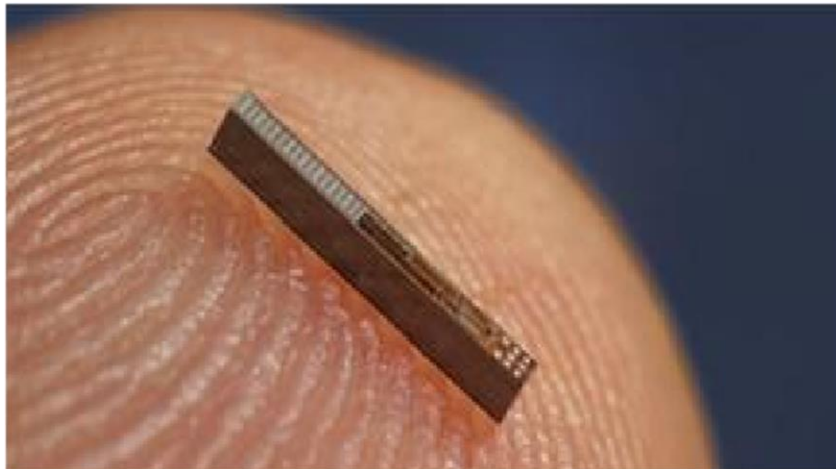
Investment highlights

Why invest in Lifecare

Risk reducing factor



Lifecares Sencell is a novel and revolutionary continued glucose monitoring device at the size of a grain of rice. Our proprietary osmotic sensing technology will help people with diabetes to live a normal life with a reduced risk profile.



Diabetes

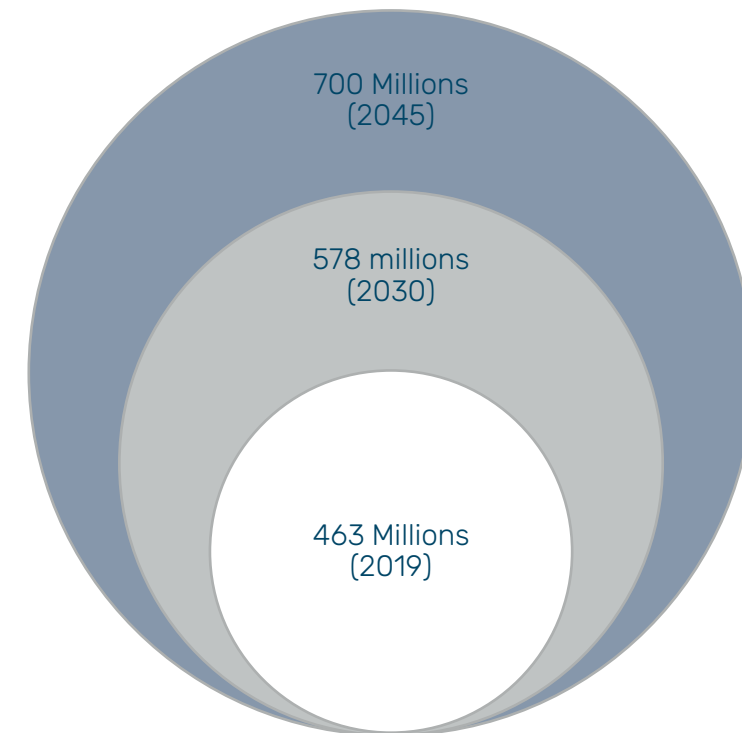
- Chronic disease - occurs either when the pancreas does not produce enough insulin or when the body cannot effectively use the insulin it produces
- 7th leading cause of death by 2030
- Risk of health complications such as heart disease, stroke, blindness, amputation, nephropathy and cardiac failure.

Diabetes market growing

Attractive market outlook

- ✓ *10% of global health expenditure is spent on diabetes - USD 760 billion*
- ✓ *1 in 2 adults with diabetes are undiagnosed - 232 million people*

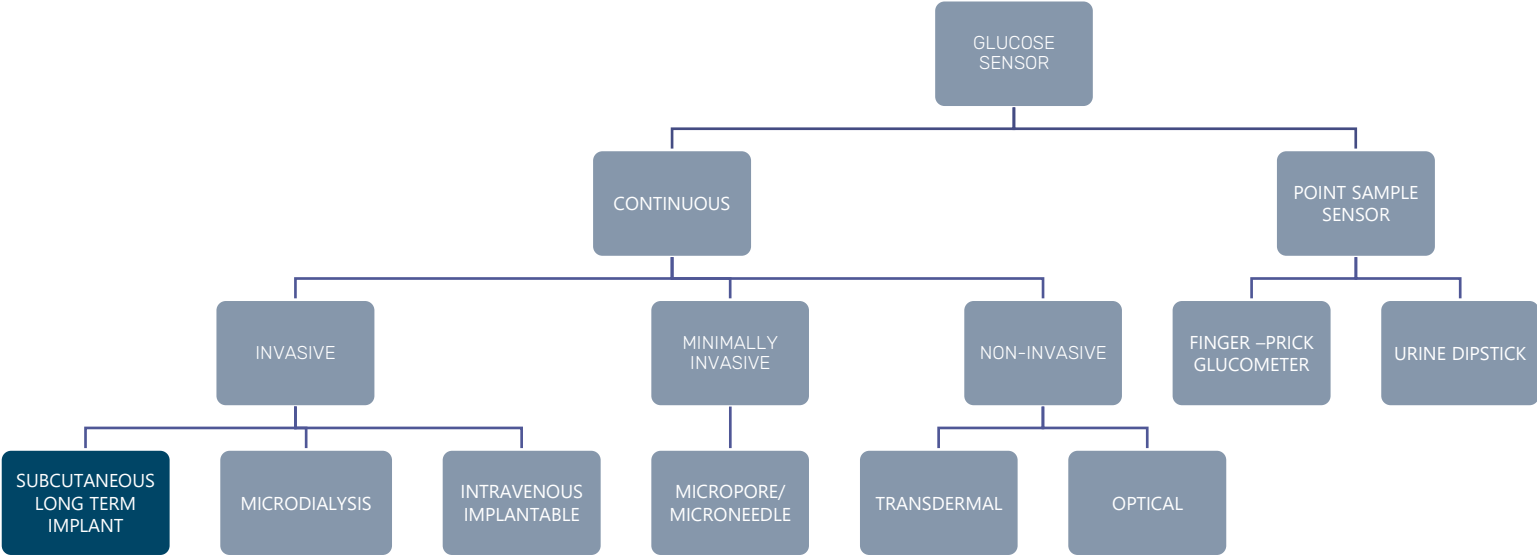
Number of adults (20-79) living with diabetes



Source: International Diabetes Federation

Glucose measurement market growing

- *The Continuous Glucose Monitoring market 2019 was \$3.8 billion, estimated CAGR of 26% 2020-2025*
- *The Blood Glucose Meters market 2020 was \$13.7 billion, estimated CAGR of 10% 2020-2025*



Source: www.marketdataforecast.com, www.mordorintelligence.com

Content overview



Why invest in Lifecare



Lifecare organization



Investment highlights

Highly skilled and experienced team

World class expertise in diabetes medicine and technology



Joacim Holter
CEO

- LL.M from the University of Bergen, Norway
- Chairman and member of the Lifecare Board of Directors from 2011 to 2020.



Prof. Andreas Pfützner
CSO

- Professor for internal medicine and laboratory medicine at DTMD University Luxembourg.
- Over 30 years of pharmaceutical and device development experience within diabetes technology.



Prof. David Klonoff
Scientific Advisory Board
Chairman

- Clinical professor of Medicine, UCSF, USA.
- Over 35 years of academic and professional experience dedicated to research on diabetes and diabetes technology.



Prof. Lutz Heinemann
Board of Directors
Scientific Advisory Board

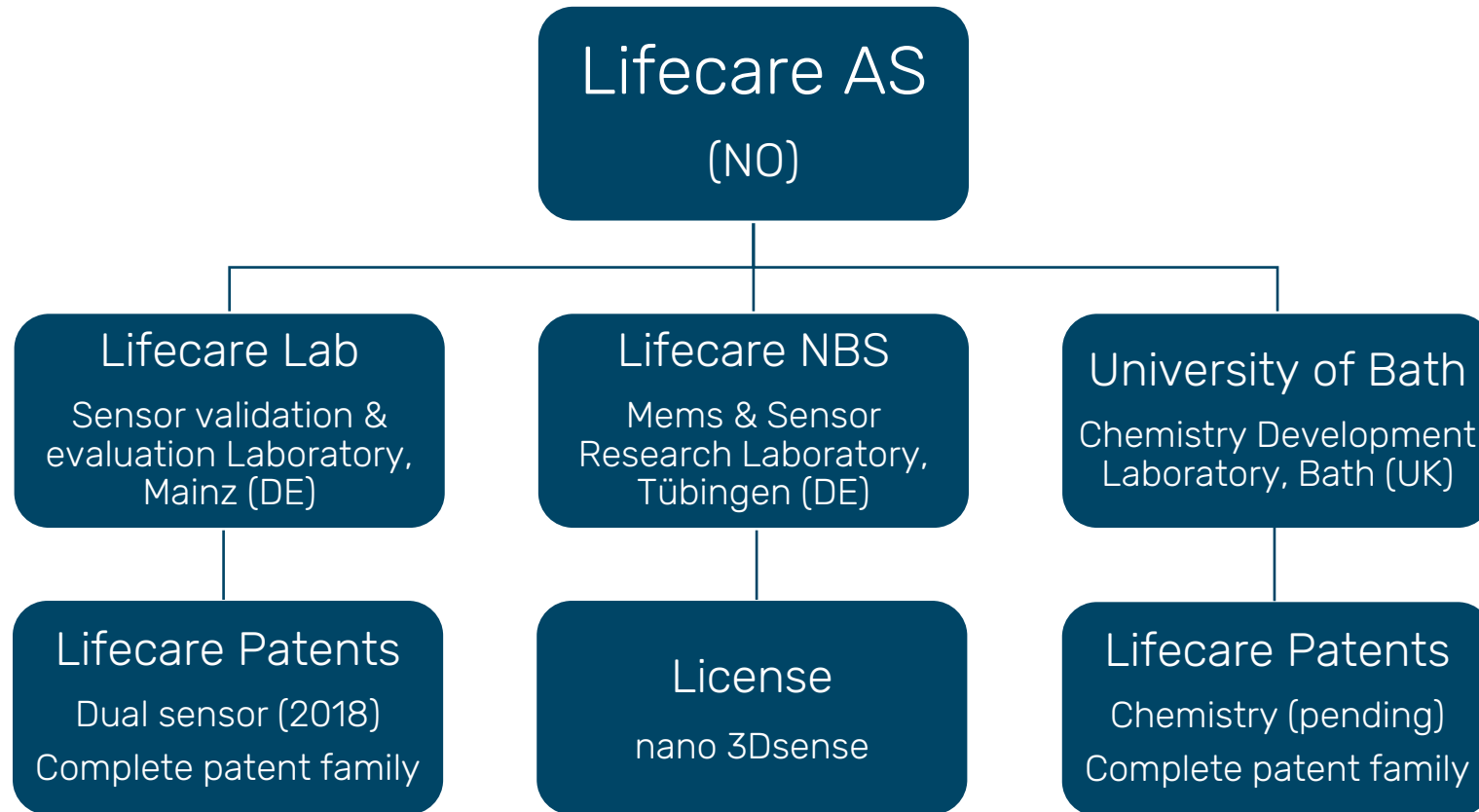
- Professor at the University of Düsseldorf, Germany.
- Over 30 years of research and device development experience within diabetes technology.



Bo Petersson
Board of Directors

- Ph.D. in Chemistry, The Technical University of Denmark.
- Over 25 years of work experience in developing diabetes technology products.

Organization



Content overview



Why invest in Lifecare



Lifecare organization



Investment highlights

Take control – take care



Inject and forget

Long term use and no body worn devices



Convenient and simple in use

Lower cost of care



Maintain control

Actionable data
Higher sensitivity
Improved quality of life



Sencell – a contributor to solve the diabetes pandemic



Accurate

Osmotic pressure correlates
100% with glucose levels



User friendly

No calibration needed,
inject and forget



Invisible

Miniature sensor injected
under the skin



Continuous measurement

Real time measurement of
glucose levels through
osmotic pressure technology

Core technology well protected by patents

Double membrane patent

2004-2024

- Composition of membranes
- A pressure sensor with a chamber on each side, where the two chambers have individual semi-permeable membranes
- Valid 2024

Augmented osmotic pressure patent

2010-2030

- Apparatus for measuring augmented osmotic pressure
- Patent valid 2030
- Approved EPO

Chemistry

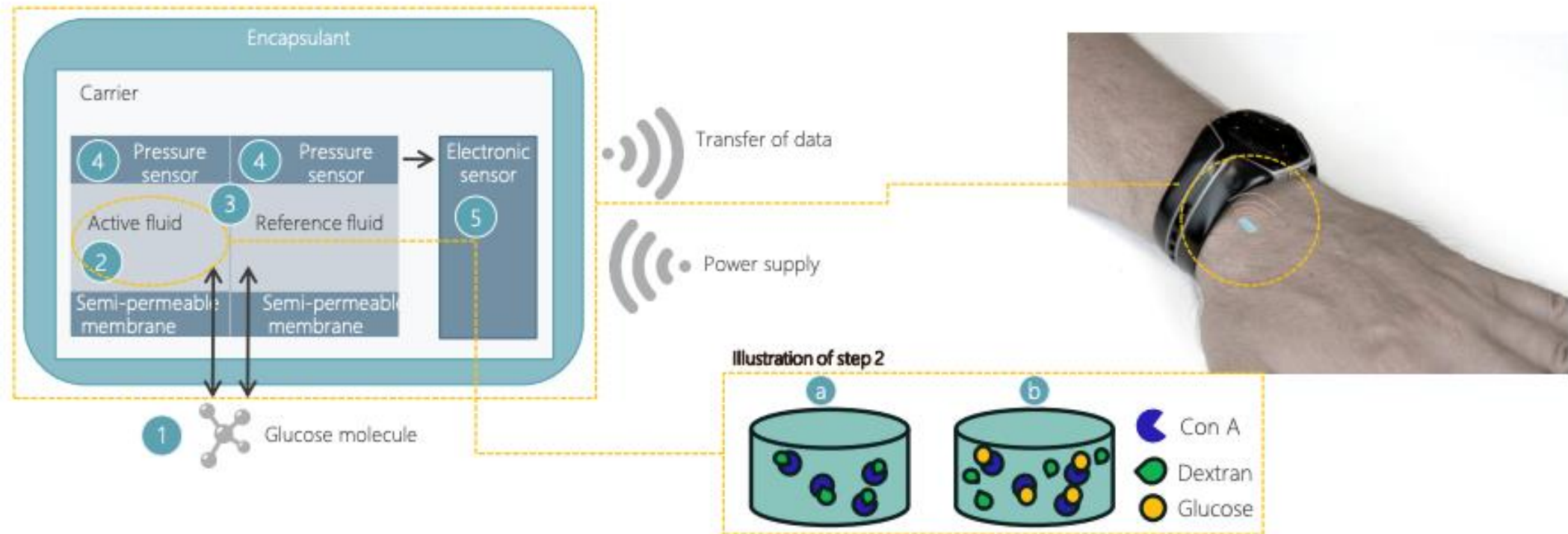
- Active fluid composition and method of production and method of production of active fluid, which can be used in a sensor for measurement of glucose concentrations in fluids
- Pending

Dual sensor patent

2018-2038

- Implantable sensor with two chambers, each with a pressure sensor
- Valid 2038

Technology – user friendly



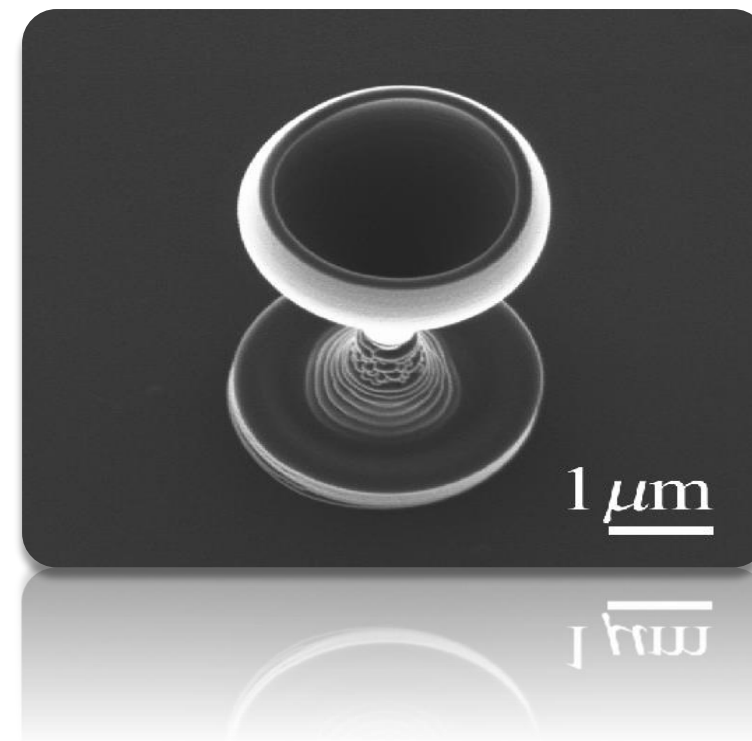
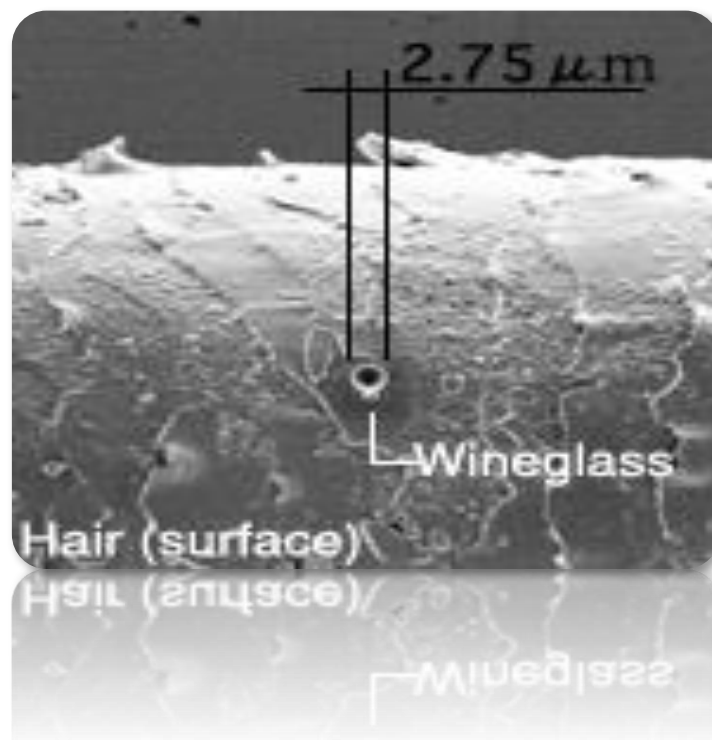
Technology - invisible

Enabled by precise nanoscale 3D-printing

Miniaturization
Resolution 10nm

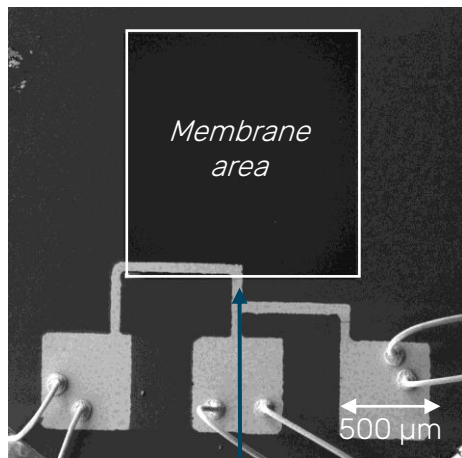
Print on any substrate material

Rapid prototyping within minutes

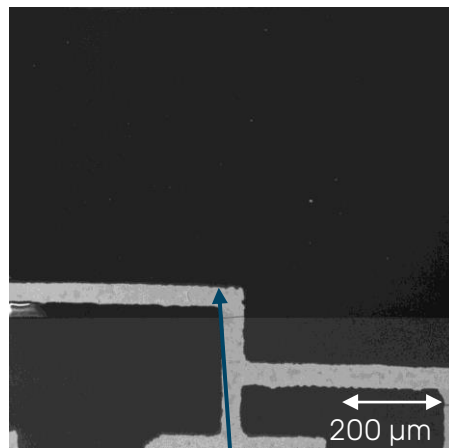


Technology – accurate and continuous

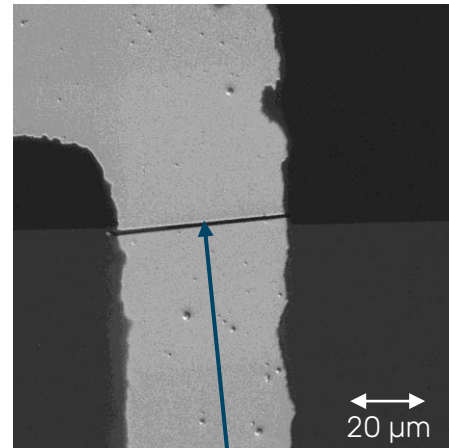
Overview in electron microscope: Osmotic pressure sensors - sensor element printed to electrode by a controlled 3d nanoprinting process



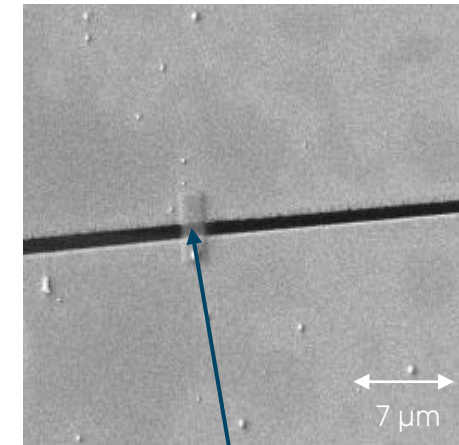
Electrode for nanosensor access below the membrane area



Electrode position at the edge of the membrane area

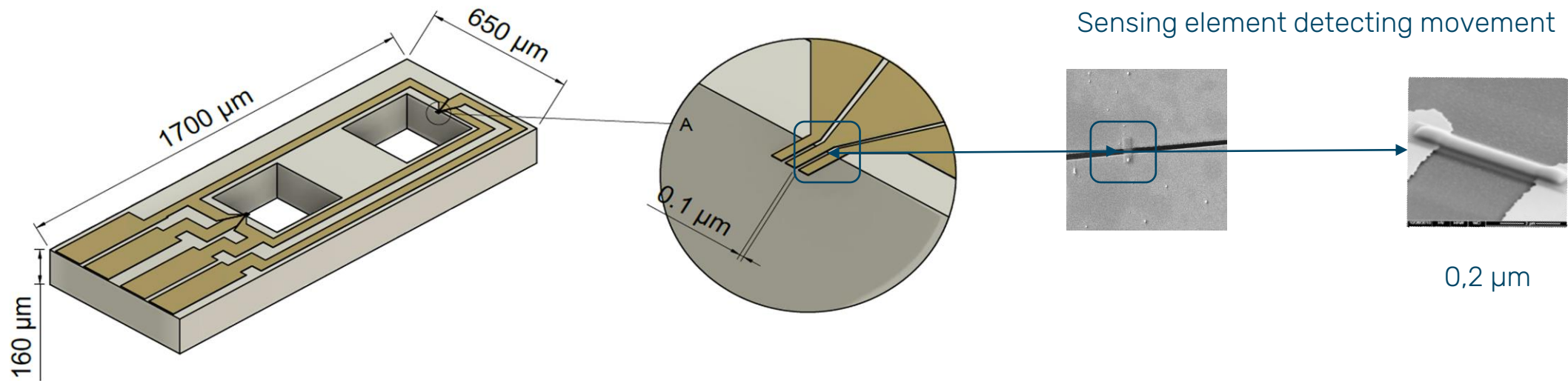


<1 μm gap between electrodes exactly positioned over the membrane edge



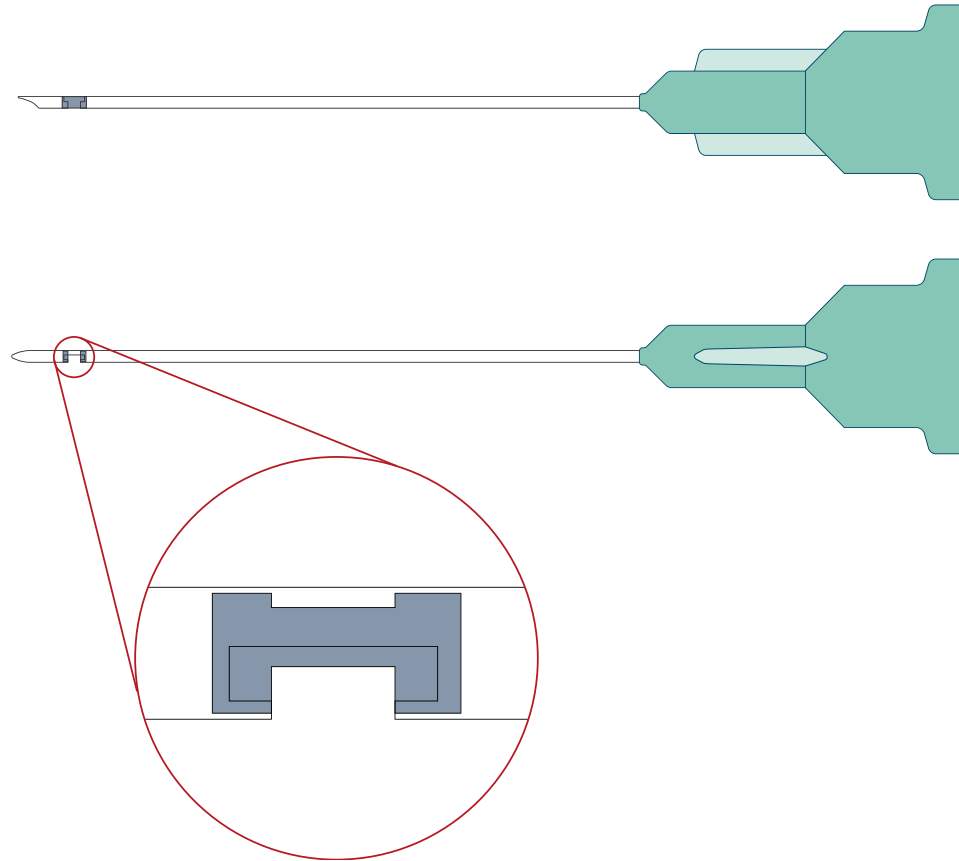
3D printed 4x1 μm² sensing element detecting movement

Technology – Sencell model



Small body device containing pressure membrane, active chamber, pressure sensor, microelectronics and wireless communication

Technology – Sencell needle sensor



Major milestones

- ✓ In-vitro testing of basic technology: osmotic pressure, chemistry
- ✓ Pre-clinical tests with basic technology: single chamber measurement
- ✓ Pre-Clinical tests with improved technology: dual chamber measurement
- ✓ Miniaturization of sensing element – shrinking the product to a grain of rice

Valuedriven future milestones

Initiating product development

Lifecare Sencell



Lifecare Nanobiosensors



Clinical studies

LFS-SEN-001

- Wired Needle Sensor
- 15 participants (10 healthy subjects & 5 patients with T1D)
- 3 days / proof of concept in humans

LFS-SEN-002

- Implanted Encapsulated Wireless Sensor
- 50 patients with type 1 or type 2 diabetes
- 3 months
- System performance + biocompatibility

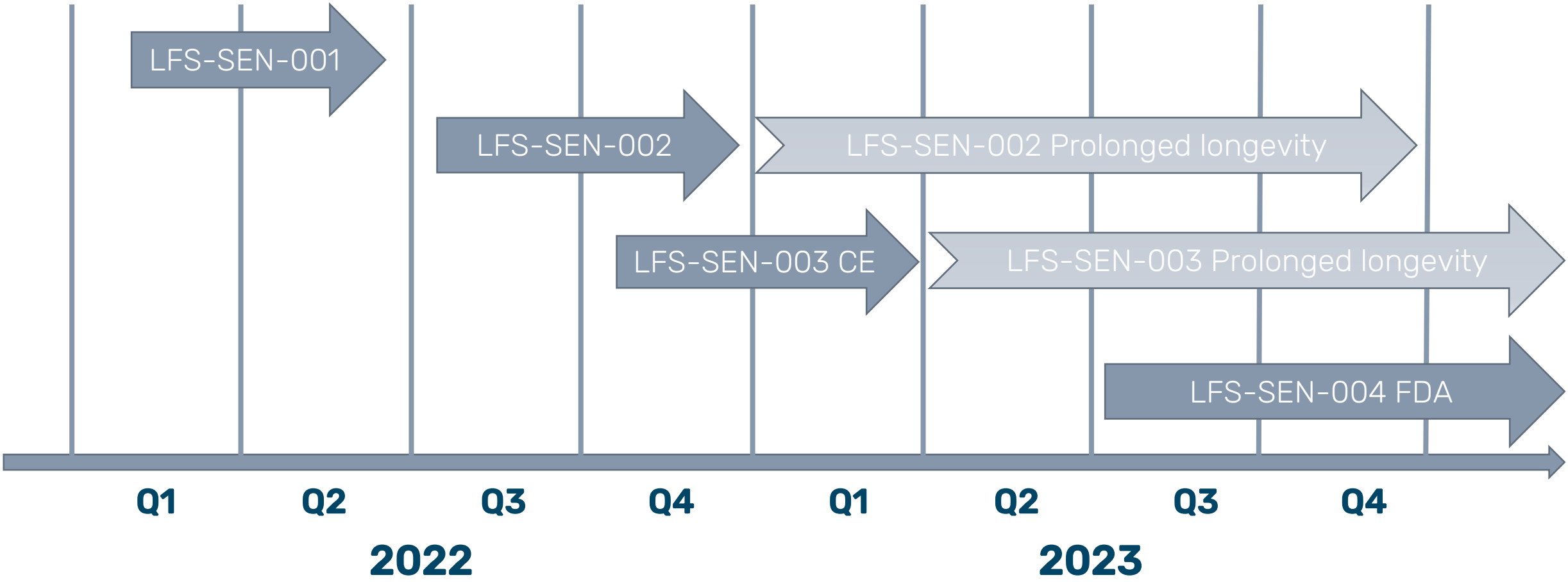
LFS-SEN-003
CE Study

- Implanted Encapsulated Wireless Sensor
- 150 patients with type 1 or type 2 diabetes
- 3 months
- System performance + biocompatibility

LFS-SEN-004
US FDA

- Implanted Encapsulated Wireless Sensor
- 250 patients with type 1 or type 2 diabetes (non-caucasian)
- 3 months
- System performance + biocompatibility

Clinical studies timeline



Risk factors



delay due to prolonged delivery timelines of sensor components



delay due to pandemic developments



delay due to (unforeseen) new regulatory requirements

Lifecare potential



Leveraging Lifecare's validated technology platform for maximum value generation



Technical development Lab acquired by Lifecare Sept. 2021



Aim to accelerate and expand the pipeline



Chemistry research



Seek strategic partnerships to complement our strengths



Artificial pancreas

Product development agreement Sanofi



Sanofi-Avenis Group sponsor the development program for miniaturizing the Sencell Glucose sensor with funding of EUR 290.000 based on completion of defined development phases



The Development Agreement is based on a robust evaluation and due diligence process from Sanofi scientists and business department, including a detailed review of the product development plan and the commercial aspects of Lifecare's Sencell Glucose relative to Sanofi's product portfolio and the competitive landscape



Sanofi is entitled to a "first right of refusal" to negotiate an exclusive and worldwide distribution license of Lifecare technology and IP for glucose monitoring. The finalization of pilot study in humans approved by BfArM and planned for H1 2022 is the next phase of the Development Agreement

FORGETDIABETES - A radically new approach to diabetes treatment



Lifecare is the selected partner and the only commercial partner in this innovative, international project



Create a bionic pancreas

Uniquely capable to exploit physiological glucose sensing and hormones delivery route



enabling intraperitoneal insulin delivery

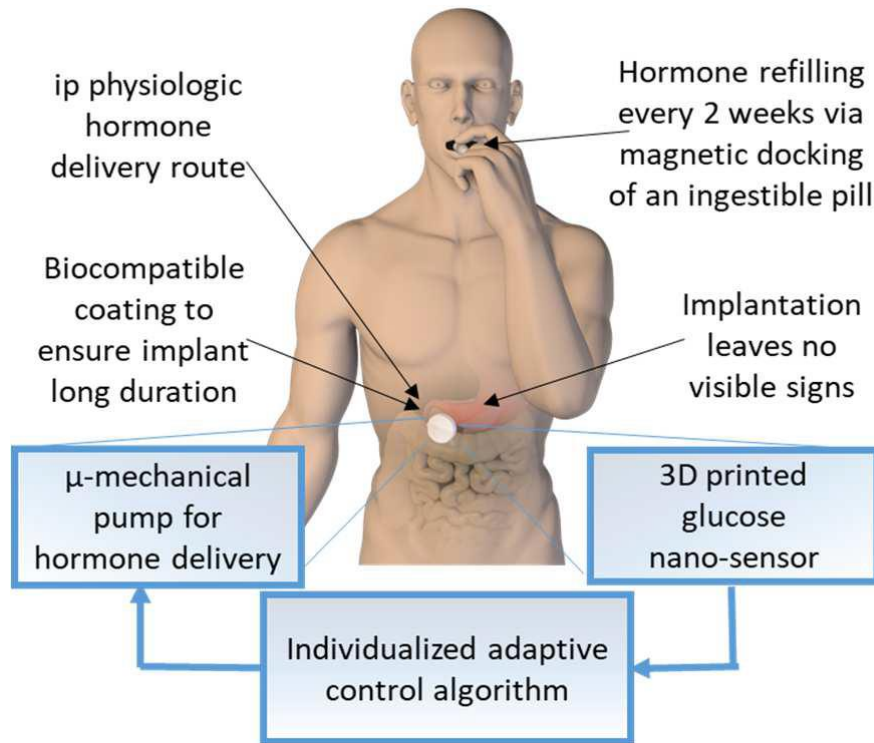
Optimising glycaemic control



restoring glucose regulation

Goes for patients with diabetes as well as healthy individuals

FORGETDIABETES - A radically new approach to diabetes treatment



www.forgetdiabetes.eu



European Commission

Horizon 2020
European Union funding
for Research & Innovation

Multiple potential products



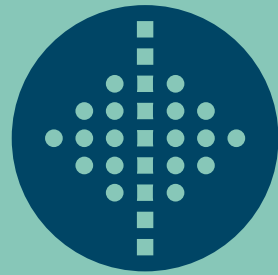
Pipeline has potentially multiple therapeutic areas



Chemistry giving the opportunity to expand product areas in combination with Sencell



Several patents in preparation



LIFECARE